



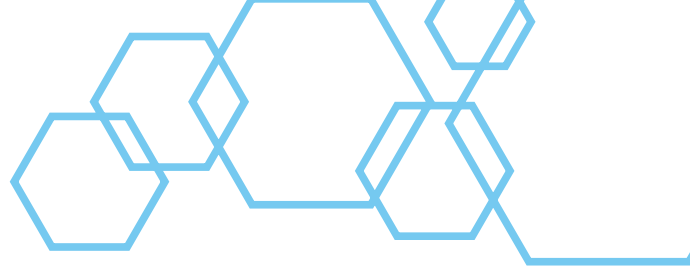
ADD VISION
DIGITAL SIGNAGE SOLUTIONS



ADD VISION
DIGITAL SIGNAGE SOLUTIONS

ADD VISION
LED SOLUTIONS

INDOOR DIRECT VIEW LED



Add Vision's Indoor Direct View LED Solutions offer state-of-the-art SMD Direct View LED technology with an ultra-high 6,500:1 contrast ratio, delivering stunning image quality with vivid colors, true blacks, and crystal clarity across a seamless display.



ABOUT THIS SOLUTION

Seamless Video Wall:

Modular design for large-scale, bezel-free displays with immersive visuals.

High Contrast Ratio:

Ultra-high 6,500:1 contrast for vibrant colors and true blacks.

Flexible Design:

Customizable sizes and shapes to fit any space.

Easy Installation & Maintenance:

Lightweight cabinets, magnetic modules, and front-service access for quick setup and repairs.

Slim, Durable Cabinets:

Warp-resistant aluminum ensures flawless alignment.

Quiet Operation:

Fanless design for silent performance in indoor spaces.

CMS Control:

Manage content anywhere with Add Vision's user-friendly online system.

End-to-End Support:

From custom designs to hassle-free installation.

Warranty & Support:

2-year warranty and lifetime technical assistance.

SPECIFICATIONS

Pixel Pitch Options:

Available in P1.8 and P2.5 pixel pitches; other models are available on request.

Brightness:

800cd/m² for P1.8; 550cd/m² for P2.5.

LED Type:

SMD1515 for P1.8; SMD2121 for P2.5.

Contrast Ratio: 6,500:1.

Viewing Angle: 170°.

Refresh Rate:

2880Hz for P1.8; 3840Hz for P2.5.

Cabinet Size:

640x480x31.4mm for P1.8; 640x480x54.3mm for P2.5.

Net Weight:

6.2kg for P1.8; 6.8kg for P2.5.

Power Consumption:

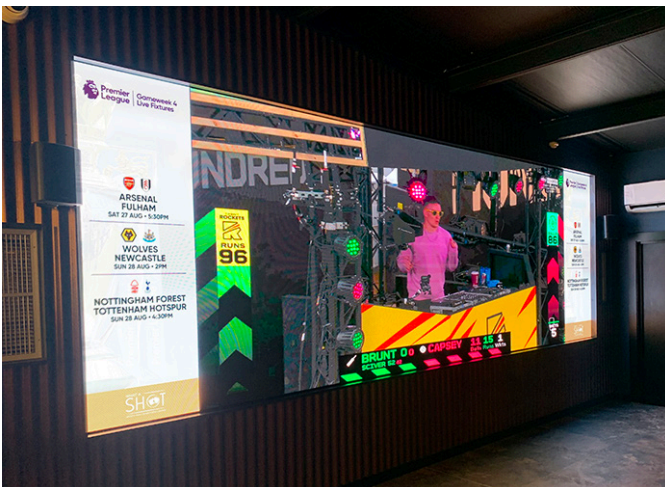
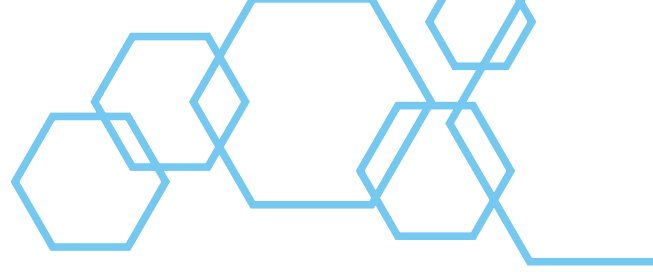
Average 36W, maximum 110W for P1.8; average 33W, maximum 95W for P2.5.

Operating Temperature: -10°C to +30°C.

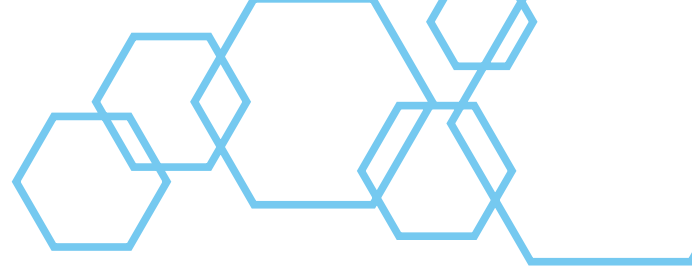
Operating Humidity: 10% to 65%.

Lifetime: 100,000 hours.

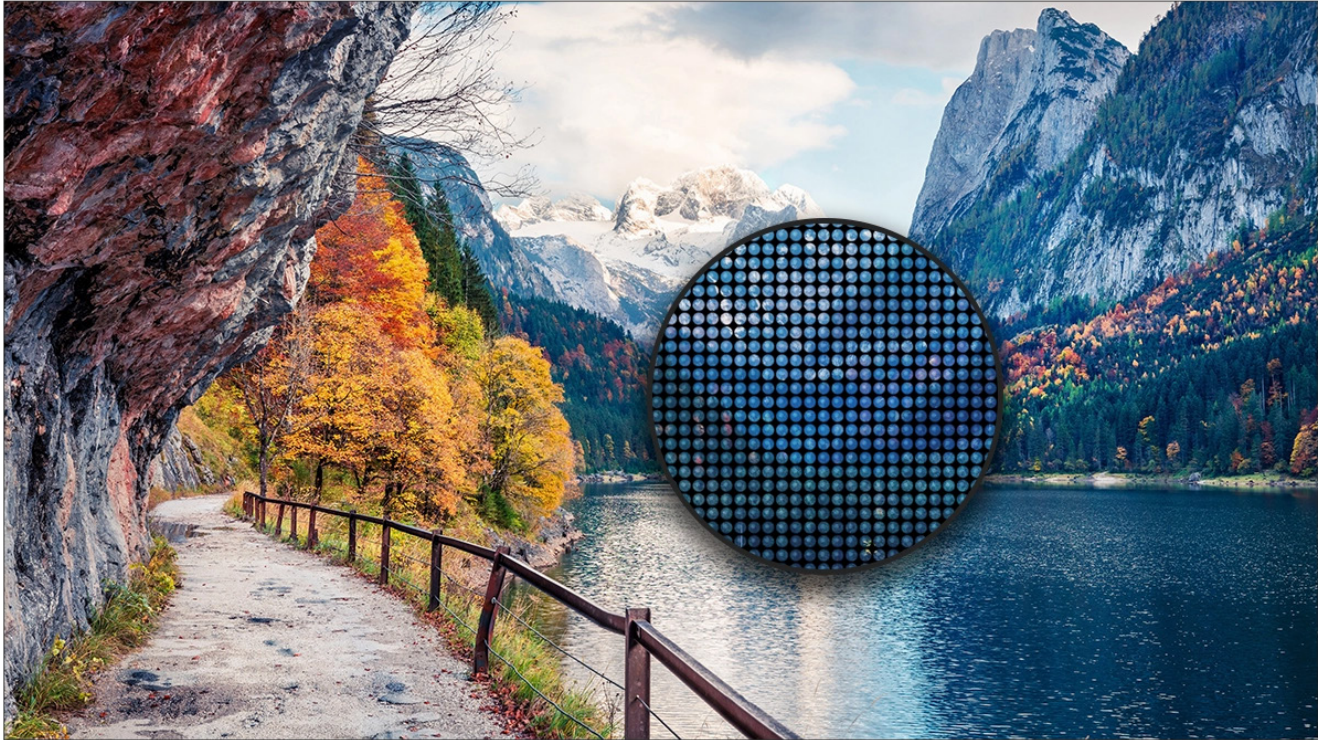
INDOOR DIRECT VIEW LED EXAMPLES



OUTDOOR DIRECT VIEW LED



Add Vision's Outdoor Direct View LED Solutions offer state-of-the-art SMD-LED technology, delivering stunning image quality across seamless displays. With advanced video processing, these screens produce accurate and vibrant colors without distortion, ensuring remarkable viewing experiences



ABOUT THIS SOLUTION

Seamless Video Wall:

Modular design for large-scale, bezel-free displays with immersive visuals.

Ultra High Contrast Ratio:

Ultra-high 6,500:1 contrast for vibrant colors and true blacks.

Flexible Design:

Customizable sizes and shapes to fit any space.

Weatherproof Design:

IP-rated, durable aluminum casing to withstand harsh weather conditions.

Easy Installation & Maintenance:

Lightweight cabinets, magnetic modules, and front-service access for quick setup and repairs.

Slim, Durable Cabinets:

Warp-resistant aluminum ensures flawless alignment.

Quiet Operation:

Fanless design for silent performance in indoor spaces.

CMS Control:

Manage content anywhere with Add Vision's user-friendly online system.

End-to-End Support:

From custom designs to hassle-free installation.

Warranty & Support:

2-year warranty and lifetime technical assistance.

SPECIFICATIONS

Pixel Pitch Options:

P4 or P6 (custom options available).

Brightness:

6,500cd/m² (P4); 8,000cd/m² (P6).5.

LED Type:

SMD1515 for P1.8; SMD2121 for P2.5.

Contrast Ratio: 10,000:1 (P4); 15,000:1 (P6).

Viewing Angle: 140° horizontal, 120° vertical.

Refresh Rate:

3,840Hz

Cabinet Size:

1,280x960x120mm.

Power Consumption:

Avg 265W/m²; max 750W/m².

Operating Temperature: -20°C to +50°C.

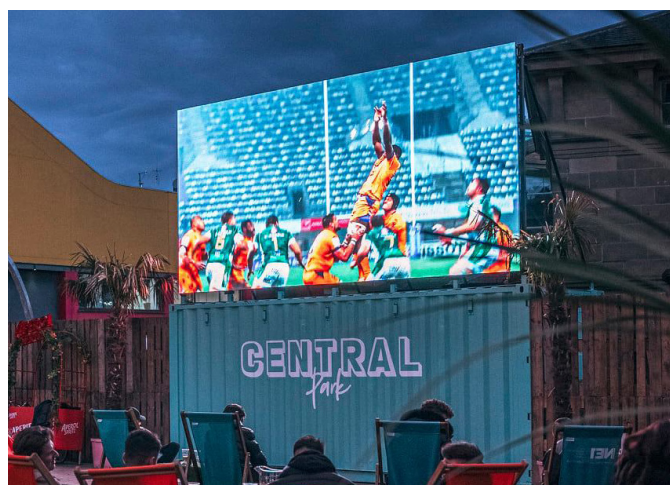
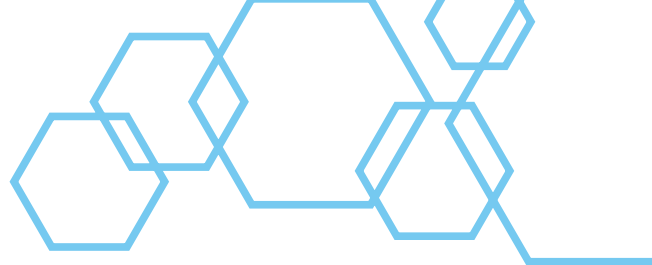
Operating Humidity: 10% to 95%.

Lifetime: 100,000 hours.

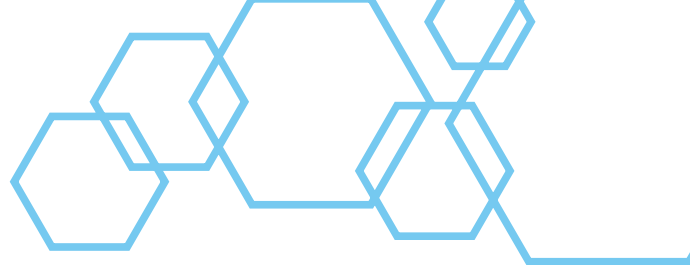
CLOUD CONTENT MANAGEMENT SYSTEM

£480 per year per screen + VAT

OUTDOOR DIRECT VIEW LED EXAMPLES



WINDOW DIRECT VIEW LED



Add Vision's High Brightness Indoor Direct View LED Solutions offer state-of-the-art SMD Direct View LED technology and an ultra-high 6,500:1 contrast ratio, delivering stunning image quality. With a brightness of 2,200cd/m², these modular P2.5 cabinets are optimized for window displays, ensuring outstanding visibility even in direct sunlight.



ABOUT THIS SOLUTION

Seamless Video Wall:

Modular design for large-scale, bezel-free displays with immersive visuals.

Ultra High Contrast Ratio:

Ultra-high 6,500:1 contrast for vibrant colors and true blacks.

Flexible Design:

Customizable sizes and shapes to fit any space.

High Brightness

2,200cd/m² ensures clear visibility, even in direct sunlight.

Easy Installation & Maintenance:

Lightweight cabinets, magnetic modules, and front-service access for quick setup and repairs.

Slim, Durable Cabinets:

Warp-resistant aluminum ensures flawless alignment.

Quiet Operation:

Fanless design for silent performance in indoor spaces.

CMS Control:

Manage content anywhere with Add Vision's user-friendly online system.

End-to-End Support:

From custom designs to hassle-free installation.

Warranty & Support:

2-year warranty and lifetime technical assistance.

SPECIFICATIONS

Pixel Pitch Options:

P2.5 (other options available).

Brightness:

2,200cd/m².

LED Type:

SMD1515 for P1.8; SMD2121 for P2.5.

Contrast Ratio: 6,500:1

Viewing Angle: 170°

Refresh Rate:

3,840Hz

Cabinet Size:

640x480x54.3mm.

Power Consumption:

Avg 33W; Max 95W

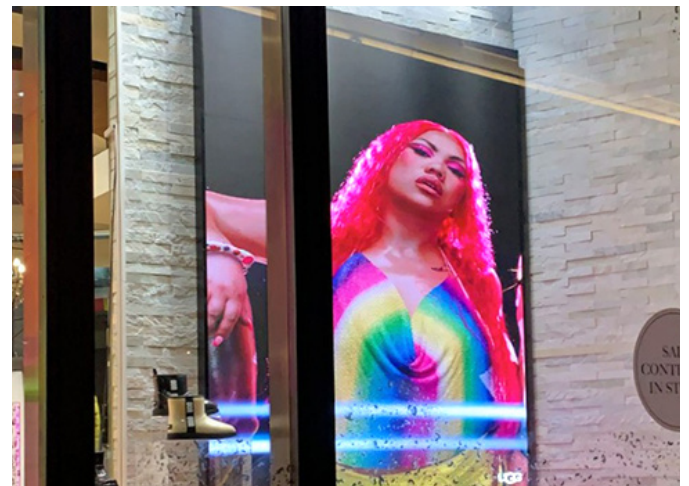
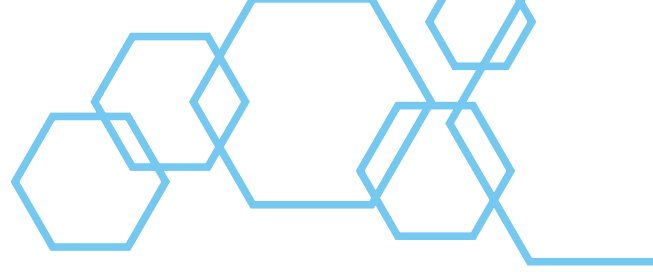
Operating Temperature: -20°C to +50°C.

Operating Conditions:

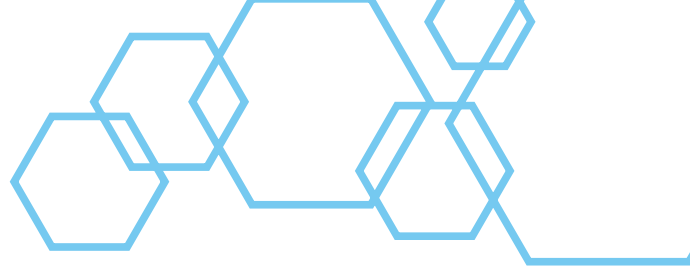
-10°C to +30°C; 10%-65% humidity.

Lifetime: 100,000 hours.

WINDOW DIRECT VIEW LED EXAMPLES



SHOP FACIA DIRECT VIEW LED



Add Vision's High Brightness Indoor Direct View LED Solutions offer state-of-the-art SMD Direct View LED technology and an ultra-high 6,500:1 contrast ratio, delivering stunning image quality. With a brightness of 2,200cd/m², these modular P2.5 cabinets are optimized for window displays, ensuring outstanding visibility even in direct sunlight.



ABOUT THIS SOLUTION

Versatile Content Formats:

Display dynamic videos, images, and text to captivate passersby.

Weatherproof Design:

Robust IP-rated aluminum enclosure protects against harsh weather conditions, ensuring reliable outdoor performance.

High Brightness:

Sunlight-readable displays maintain outstanding visibility even in direct sunlight.

Customizable Sizes:

Tailored displays can be created to accommodate specific project requirements.

All-in-One Solution:

Includes DV-LED modules, cabinets, mount, controllers, media player, and a lifetime license to Add Vision's CMS, My Signage Portal.

SPECIFICATIONS

Pixel Pitch Options:

Available in P4 and P6; other models available upon request.

Brightness:

2,200cd/m². Sunlight-readable for clear visibility in direct sunlight.

LED Type:

SMD technology for vibrant and dynamic displays.

Contrast Ratio:

6,500:1 High contrast for vivid colors and deep blacks.

Viewing Angle: 170°

Refresh Rate:

3,840Hz High refresh rate for smooth and flicker-free visuals.

Cabinet Size:

640x480x54.3mm.

Power Consumption:

Avg 33W; Max 95W

Operating Temperature: -20°C to +50°C.

Operating Conditions:

-10°C to +30°C; 10%-65% humidity.

Lifetime: 100,000 hours.

SHOP FACIA DIRECT VIEW LED EXAMPLES

